

# Kyoto City Internal Inundation Hazard Map

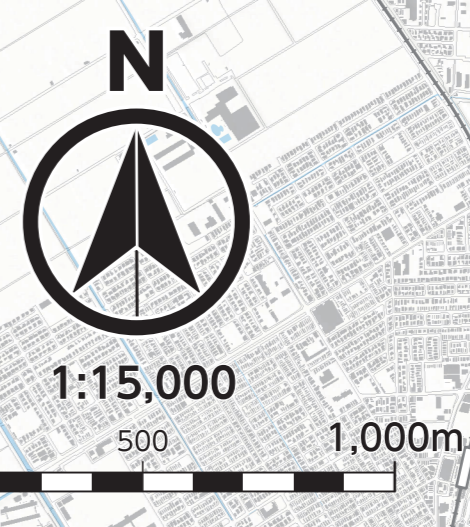
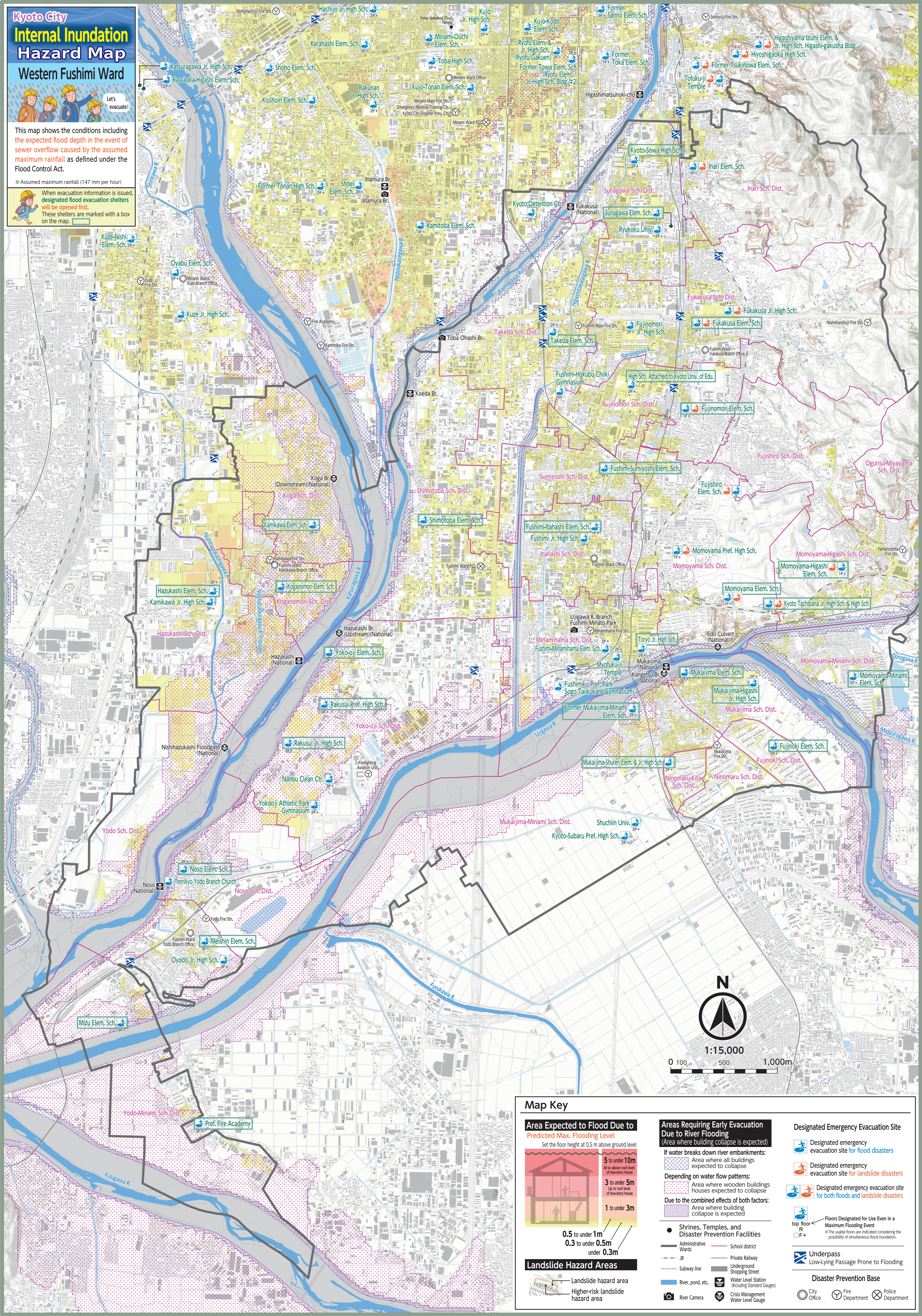
## Western Fushimi Ward

Let's evacuate!

This map shows the conditions including the expected flood depth in the event of sewer overflow caused by the assumed maximum rainfall as defined under the Flood Control Act.

※ Assumed maximum rainfall (147 mm per hour)

When evacuation information is issued, designated flood evacuation shelters will be opened first. These shelters are marked with a box on the map.



### Map Key

#### Area Expected to Flood Due to Predicted Max. Flooding Level

Set the floor height at 0.5 m above ground level

5 to under 10m	At or above roof level of two-story house
3 to under 5m	Up to roof level of two-story house
1 to under 3m	

0.5 to under 1m  
0.3 to under 0.5m  
under 0.3m

#### Landslide Hazard Areas

Landslide hazard area  
Higher-risk landslide hazard area

#### Areas Requiring Early Evacuation Due to River Flooding (Area where building collapse is expected)

If water breaks down river embankments:

- Area where all buildings expected to collapse

Depending on water flow patterns:

- Area where wooden buildings houses expected to collapse

Due to the combined effects of both factors:

- Area where building collapse is expected

#### Shrines, Temples, and Disaster Prevention Facilities

- Shrine
- Temple
- Disaster prevention facility
- School district
- Private Railway
- Underground Shopping Street
- Water Level Station (Including Standard Gauges)
- Crisis Management Water Level Gauge

#### Designated Emergency Evacuation Site

- Designated emergency evacuation site for flood disasters
- Designated emergency evacuation site for landslide disasters
- Designated emergency evacuation site for both floods and landslide disasters
- top floor R
- F+

Floors Designated for Use Even in a Maximum Flooding Event as the usable floors are indicated considering the possibility of simultaneous flood inundation.

#### Disaster Prevention Base

- City Office
- Fire Department
- Police Department